

REVIEW QUESTIONS:**A. MULTIPLE CHOICE TYPE:****(Select the most appropriate option in each case)****Question 1:**

Agranulocytes are:

- (a) lymphocytes and monocytes
- (b) lymphocytes and basophils
- (c) eosinophils and basophils
- (d) eosinophils and monocytes

Solution 1:

- (a) lymphocytes and monocytes

Question 2:

White blood cells engulf bacteria in a process called:

- (a) diapedesis
- (b) phagocytosis
- (c) active transport
- (d) passive transport

Solution 2:

- (b) phagocytosis

B. VERY SHORT ANSWER TYPE:**Question 1:****Given below are certain structures, write the term for the functional activity.**

- (a) Blood platelets and
- (b) Neutrophils and
- (c) Erythrocytes and
- (d) Lymphocytes and
- (e) Bone marrow and

Solution 1:

- (a) Blood platelets and blood coagulation
- (b) Neutrophils and phagocytosis
- (c) Erythrocytes and transportation of gases
- (d) Lymphocytes and Produce antibodies
- (e) Bone marrow and destruction of old and weak RBC's/production of RBCs and WBCs.



Question 2:

Name the following:

- (a) The cells which transport oxygen to the different parts of the human body.
- (b) The cells that initiate blood clotting.

Solution 2:

- (a) Red Blood Cells
- (b) Blood Platelets

C. SHORT ANSWER TYPE:**Question 1:**

Enumerate the structural differences between white blood cells and red blood cells.

Solution 1:

Structural Differences between White Blood Cells and Red Blood Cells:

White Blood Cells	Red Blood Cells
1. White blood cells are amoeboid.	Red blood cells are minute biconcave disc-like structures.
2. They are nucleated cells.	They are anucleated cells.
3. Haemoglobin is absent in red blood cells.	Haemoglobin is present in red blood cells.

Question 2:

Why is it necessary to know the blood groups before giving transfusion?

Solution 2:

During blood transfusion it is necessary to know the blood groups before transfusion because it is important that the blood groups of the donor and the recipient are compatible. In case of an incompatible blood transfusion, the recipient develops antibodies that attack the antigens present on the RBCs of the donor causing the blood cells to clump together which may result in death.

Question 3:

Differentiate between members of each of the following pairs with reference to phrases in brackets:

- (a) Antibodies and antibiotics (Source)
- (b) RBC and WBC (structure)
- (c) serum and vaccine (Composition)

Solution 3:

- (a) Antibodies are produced by lymphocytes in response to the entry of pathogens in the blood stream.

Antibiotics are the medicines extracted from some bacteria and fungi. Antibiotics destroy or inhibit the growth of pathogens.



(b) RBC: RBC is enucleated, biconcave, disc-like structure, flat in the centre while thick and rounded at the periphery.

WBC: WBC is nucleated and amoeboid in shape.

(c) Serum: The plasma from which the protein fibrinogen has been removed is called serum.

Vaccine: Vaccine is killed or living weakened germs which are introduced in the body to stimulate the production of antibodies against pathogens for a particular disease.

Question 4:

Complete the following statement by filling in the blank from the choices given in the brackets. An anticoagulant present in the blood is(heparin, hirudin, thromboplastin, calcium).

Solution 4:

Heparin

D. LONG ANSWER TYPE:

Question 1:

What are the functions of blood plasma?

Solution 1:

The functions of blood plasma are:

- (a) Transports of digested food from the alimentary canal to tissues.
- (b) Transports excretory materials from tissues to excretory organs.
- (c) Distributes hormones from the glands to their target site.
- (d) Distributes heat in the body to maintain the body temperature.

Question 2:

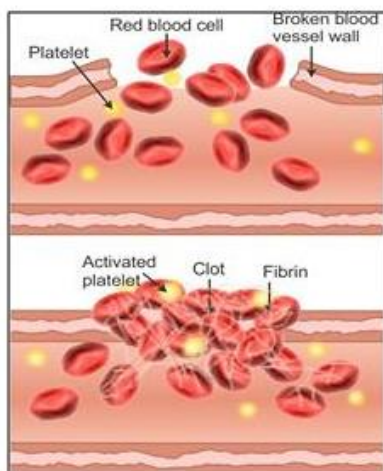
What are the main steps in coagulation of blood?

Solution 2:

Blood clotting or coagulation occurs in a series of the following steps:

- (a) The injured tissue cells and the platelets disintegrate at the site of wound to release thromboplastin.
- (b) The thromboplastin with the help of calcium ions converts inactive prothrombin into active thrombin.
- (c) Thrombin in the presence of calcium ions converts soluble fibrinogen into insoluble fibrin which forms a mesh or network at the site of wound.
- (d) The blood cells trapped in this network shrink and squeeze out the plasma to leave behind a solid mass known as the clot.



**Question 3:**

What are the following?

(a) Rh factor (b) Universal donor (c) Diapedesis.

Solution 3:

(a) **Rh factor** - It is an inherited antigen often found on the blood cells. Some individuals have these antigens and are thus Rh positive (Rh+) while others who do not have this antigen are Rh negative (Rh-).

(b) **Universal donor** - The person with blood group O is a universal donor as this type of blood can be given to persons with any blood group i.e. O, A, B, AB.

(c) **Diapedesis** - It is the squeezing of leucocytes through the wall of capillaries into the tissues.

Question 4:

Is it possible for the blood to clot under the skin? Give reason in support of your answer.

Solution 4:

Blood clotting is not dependent on the exposure of blood to air. In fact, clotting can be caused by the movement of blood over a rough surface such as on cholesterol deposit inside of a blood vessel of the skin.

Question 5:

State any five functions of the blood.

Solution 5:

The functions of the blood are:

(a) Transport of digested food from the alimentary canal to tissues. These substances are simple sugars like glucose, amino acids, vitamins, mineral salts, etc.

(b) Transport of oxygen in the form of an unstable compound 'oxyhaemoglobin' from the lungs

to the tissues.

- (c) Transport of carbon dioxide from the tissues to the lungs.
- (d) Transport of excretory materials from the tissues to the liver, kidney or the skin for elimination.
- (e) Distribution of hormones from glands to the target sites.
- (f) Distribution of heat to keep the body temperature uniform.
- (Any five)

E. STRUCTURED / APPLICATION / SKILL TYPE:

Question 1:

Given below is a diagram of a smear of human blood. Study the same and answer the questions that follow:

- (a) Name the parts 1, 2, 3 and 4 indicated by guidelines.
- (b) Mention two structural differences between the parts labelled '1' and '2'.
- (c) What is the main function of the parts labelled 1, 2, 3 respectively?
- (d) What is the life span of the part labelled '1'?
- (e) Name a soluble protein found in '4' which helps in the clotting of blood.

Solution 1:

- (a) (i) Red Blood Cell (RBC),
(ii) White Blood Cell (WBC),
(iii) Blood Platelet
(iv) Blood Plasma.
- (b) The red blood cells are minute biconcave disc-like structures whereas the white blood cells are amoeboid.
- (c) Function of part 1 (RBC): Transport of respiratory gases to the tissues and from the tissues, transport of nutrients from the alimentary canal to the tissues.
Function of part 2 (WBC): WBCs play major role in defense mechanism and immunity of the body.
Function of part 3 (Blood Platelet): Blood platelets are the initiator of blood clotting.
- (d) The average life span of a red blood cell (RBC) is about 120 days.
- (e) Thromboplastin

REVIEW QUESTIONS:

A. MULTIPLE CHOICE TYPE:

(Select the most appropriate option in each case)

Question 1:

The nearest organ to which the heart supplies oxygenated blood is:

- (a) Lung
- (b) Stomach



- (c) Intestine
- (d) Heart itself

Solution 1:

- (d) Heart itself

Question 2:

When a doctor is recording your pulse, he is pressing on your wrist exactly on a

- (a) vein
- (b) capillary
- (c) artery
- (d) arteriole

Solution 2:

- (c) artery

Question 3:

The valve present between the right atrium and the right ventricle is the

- (a) tricuspid valve
- (b) bicuspid valve
- (c) semi-lunar valve
- (d) mitral valve

Solution 3:

- (a) tricuspid valve

Question 4:

The blood vessel supplying blood to the kidney is the

- (a) renal vein
- (b) renal artery
- (c) dorsal aorta
- (d) hepatic vein

Solution 4:

- (b) renal artery

Question 5:

Angina pectoris is due to

- (a) defective nutrition
- (b) inadequate supply of oxygen to the heart muscle

- (c) defective functioning of mitral value
- (d) infection by a virus

Solution 5:

- (b) inadequate supply of oxygen to the heart muscle

Question 6:

The chief function of lymph nodes is to

- (a) produce WBCs
- (b) produce hormones
- (c) destroy old RBCs
- (d) destroy pathogens

Solution 6:

- (d) destroy pathogens

Question 7:

Heart sounds are produced due to

- (a) Closure of tricuspid and bicuspid valves
- (b) Rushing of blood through valves producing turbulence
- (c) Closure of aortic and pulmonary valves
- (d) Entry of blood into auricles

Solution 7:

- (a) closure of tricuspid and bicuspid valves
- (b) closure of aortic and pulmonary valves
- (c) rushing of blood through valves producing turbulence

B. VERY SHORT ANSWER TYPE:**Question 1:**

What are the average values of blood pressure in a normal adult human?

Solution 1:

The average values of blood pressure in a normal adult human are 100-140 mm for systolic pressure and 60-80 mm for diastolic pressure.

Question 2:

Is it true that your heart beats more than one lac times per day?

Solution 2:

Yes, the heart beats approximately 1, 03,680 times in a day.



Question 3:

Name the following:

- a) Any one vein which starts from an organ and ends in another organ besides the heart.
- b) The kind of blood vessels which have no muscular walls.
- c) An artery which carries impure (deoxygenated) blood.
- d) The kind of blood cells which can squeeze out through the walls of one category of blood vessels.
- e) The smallest common blood vessels formed by the union of capillaries.
- f) The blood vessels which start from capillaries and end in capillaries.
- g) The phase of the cardiac cycle in which the auricles contract.
- h) The valve present in between the chambers on the right side of the human heart.
- i) The phase of the cardiac cycle in which the ventricles get filled with blood from the atrium.
- j) The fluid found between the membranes of the heart.

Solution 3:

- a) Hepatic portal vein
- b) Blood Capillaries
- c) Pulmonary artery
- d) White blood cells
- e) Venules
- f) Portal vein
- g) Atrial systole
- h) Tricuspid valve
- i) Atrial systole
- j) Pericardial fluid

Question 4:

Write the chief functional activity of each of the following:

- (a) Blood platelets
- (b) Neutrophils
- (c) Erythrocytes
- (d) Lymphocytes
- (e) Bone marrow

Solution 4:

- (a) Blood platelets are involved in blood clotting or coagulation. Blood platelets integrate at the site of injury to release thromboplastin which initiates the process of blood clotting.
- (b) Neutrophils perform phagocytosis i.e. they engulf pathogens that enter the blood stream and destroy them.
- (c) Erythrocytes transport oxygen from the lungs to the tissues in the form of an unstable compound oxyhaemoglobin and transport carbon dioxide from the tissues to the lungs.
- (d) Lymphocytes produce antibodies against pathogens which enter the blood stream. In some cases they also perform phagocytosis.



- (e) Bone marrow is involved in formation of RBCs and WBCs. It is also involved in the destruction of old and weak RBCs.

Question 5:

Complete the following statements by filling in the blanks from the choices given in the brackets.

- (a) The blood vessels that begins and ends in capillaries is the (hepatic artery, hepatic portal vein, hepatic vein)
(b) A blood vessels which has small lumen and thick wall is (capillary, lymphatic duct, artery, venule)
(c) The valve which prevents back flow of blood in the veins and lymph vessels (mitral valve, tricuspid valve, semilunar valve).

Solution 5:

- (a) The blood vessel that begins and ends in capillaries is the hepatic portal vein.
(b) A blood vessel which has small lumen and thick wall is artery.
(c) The valve which prevents the back flow of blood in the veins and lymph vessels is semilunar valve.

Question 6:

Note the relationship between the first two words and suggest the suitable word/ words for the fourth place:

- (a) Lubb: Atrioventricular valves :: dup:
(b) Coronary artery: Heart :: Hepatic artery :

Solution 6:

- (a) Lubb : Atrio-ventricular valve :: Dup : Semilunar valves
(b) Coronary artery : Heart :: Hepatic artery : Liver

Question 7:

Give reason, why a matured mammalian erythrocyte lacks nucleus and mitochondria?

Solution 7:

A matured mammalian erythrocyte lacks a nucleus and mitochondria. The lack of a nucleus increases the surface area-volume ratio of RBCs, thus increasing the area for oxygen absorption. Also, the lack of a nucleus reduces the size of the cell, making it easy to flow through the blood vessels and more cells can be accommodated in a small area.

The lack of mitochondria implies that the cell does not use any oxygen absorbed for respiration, thus increasing the efficiency of the cell to transport oxygen as all the oxygen absorbed is transported without any loss.



C. SHORT ANSWER TYPE:**Question 1:**

What does the term “double circulation” mean?

Solution 1:

Blood flows twice in the heart before it completes one full round. The full round thus includes pulmonary and systemic circulation. In pulmonary circulation, blood enters the lungs through pulmonary arteries. Pulmonary veins collect the blood from the lungs and carry it back to the left atrium.

In systemic circulation, blood from the left ventricle enters the aorta through which the blood is sent to the body parts. From the body parts blood is collected by veins and sent back to the heart. Therefore, the blood circulation in the human body is called double circulation.

Question 2:

When are the sounds “LUBB” and “DUP” produced respectively during heart beat?

Solution 2:

The first sound LUBB is produced when the atrio-ventricular valves i.e. tricuspid and bicuspid valves close at the start of ventricular systole.

The second sound DUP is produced at the beginning of ventricular diastole, when the pulmonary and aortic semilunar valves close.

Question 3:

Why do people have a common belief that the heart is located on the left side of the chest?

Solution 3:

People have a common belief that the heart is located on the left side of the chest because the narrow end of the roughly triangular heart is pointed to the left side and during its working the contraction of the heart is more powerful on the left side which can be felt.

Question 4:

Differentiate between members of each of the following pairs with reference to the aspect asked within brackets:

- (a) Erythrocytes and leucocytes (function)
- (b) Artery and vein (direction of blood flow)
- (c) artery and vein (type of blood primarily flowing through)
- (d) Tricuspid and bicuspid valves (location)

Solution 4:

- (a)



Erythrocytes	Leucocytes
They function in the transport of oxygen throughout the body and in the removal of carbon dioxide from the body.	They help in the defense of the body against disease-causing pathogens.

- (b) An artery carries blood away from the heart whereas a vein brings blood towards the heart.
- (c) An artery generally contains oxygenated blood whereas a vein generally carries deoxygenated blood.
- (d) Tricuspid valve is located between the right atrium and right ventricle of the heart whereas a bicuspid valve is located between the left atrium and left ventricle of the heart.

Question 5:

Match the items in Column 'A' with those in column 'B' Rewrite the correct matching pairs.

Column A	Column B
SA node	Plasma
Defective hemoglobin in RBC	Serum
Muscle fibres located in the heart	Pacemaker
The liquid squeezed out of blood during clotting	Sickle cell anemia
Never tires, keep on contracting and relaxing	Purkinje fibres
Cardiac cycle	Cardiac muscles
Liquid part of the blood without corpuscles	0.85 sec

Solution 5:

Column A	Column B
SA node	Pacemaker
Defective hemoglobin in RBC	Sickle cell anemia
Muscle fibres located in the heart	Purkinje fibres
The liquid squeezed out of blood during clotting	Serum
Never tires, keep on contracting and relaxing	Cardiac muscles
Cardiac cycle	0.85 sec
Liquid part of the blood without corpuscles	Plasma



Question 6:

The table below is designed to indicate the transport of certain substance in our body. Fill in the blanks with suitable answers.

Substance	From	To
.....	Lungs	Whole body
Carbon dioxide
Urea
Digested carbohydrates	Intestines
.....	Target organs

Solution 6:

Substance	From	To
Oxygen	Lungs	Whole body
Carbon dioxide	Whole body	Lungs
Urea	Whole body	Kidneys
Digested carbohydrates	Intestines	Whole body
Hormones	Endocrine glands	Target organs

D. LONG ANSWER TYPE:**Question 1:**

What are the following?

- (a) Endothelium (b) Lymph nodes
(c) Venule (d) diastole

Solution 1:

- (a) Endothelium- It is the innermost layer of the muscular wall of an artery or a vein which faces the lumen.
(b) Lymph nodes- The structures from which fresh lymph channels arise which pour the lymph into major anterior veins.
(c) Venule- The smallest common blood vessel formed by the union of capillaries.
(d) Diastole- The relaxation of muscles of ventricles or atria.



Question 2:

Describe the structural differences between an artery and a vein

Solution 2:

Artery	Vein
An artery is a vessel which carries blood away from the heart towards any organ.	A vein is a vessel which conveys the blood away from an organ towards the heart.
Artery has thick muscular walls.	Vein has thin muscular walls.
It has a narrow lumen.	It has a broad lumen.
There are no valves.	Thin pocket-shaped valves are present in the veins.
Arteries progressively decrease in size and branch to form arterioles. Arterioles further breaks up to form capillaries.	Capillaries unite to form branches called Venules. Venules further unite to form veins.

Question 3:

What are the functions of tonsils and spleen?

Solution 3:

Tonsils: Tonsils are lymph glands located on the sides of the neck. They tend to localize the infection and prevent it from spreading it in the body as a whole.

Spleen: The spleen is a large lymphatic organ. The spleen acts as a blood reservoir in case of emergency such as haemorrhage, stress or poisoning. It produces lymphocytes and destroys worn out RBCs.

Question 4:

How do you account for the following differences?

- (a) The left ventricle has thicker walls than the right ventricle.
- (b) The walls of the right ventricle are thicker than those of the right auricle.

Solution 4:

- (a) The left ventricle pumps blood to the farthest points in the body such as the feet, the toes and the brain against the gravity while the right ventricle pumps the blood only up to the lungs. Therefore, the left ventricle has thicker walls than the right ventricle.
- (b) The right ventricle pumps blood to the lungs for oxygenation whereas the right auricle receives the blood from vena cavae and passes it to the right ventricle. Therefore, walls of the right ventricle are thicker than those of the right auricle.

Question 5:

Give reason for the following:



- (a) The walls of the left ventricle are thicker than the walls of all other chambers.
- (b) Blood flowing away from the stomach and intestines is put into circulation via the liver and not directly
- (c) The blood groups of both the donor and recipient must be known before transfusing blood.
- (d) Only the veins and not the arteries are provided with valves.
- (e) Atrial wall is less muscular than the ventricular wall.
- (f) The arteries are deep seated in the body

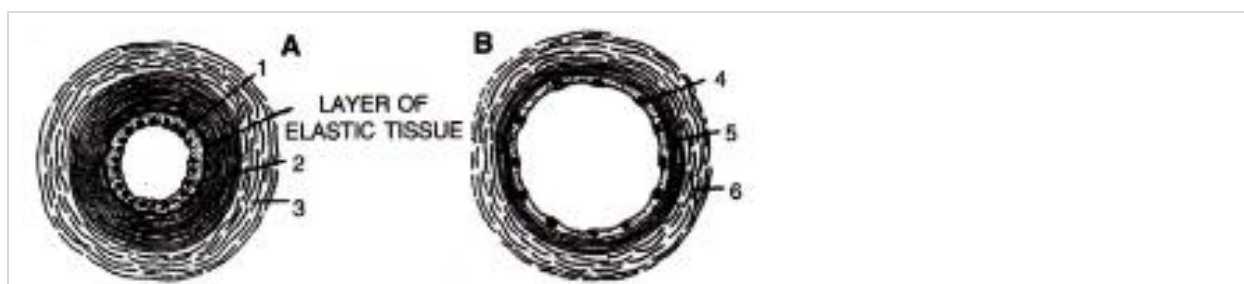
Solution 5:

- (a) The left ventricle pumps blood to the farthest points in the body such as the feet, the toes and the brain against the gravity. Thus, it requires greater force to push the blood. In order to withstand the force applied the walls of the left ventricle are thicker than the walls of all the chambers.
- (b) The blood from stomach and intestines enters the liver via hepatic portal vein because the liver monitors all the substances that have to be circulated in body. The excess nutrients such as glucose, fats are stored in the liver. Excess amino acids are broken down by the process of deamination. Toxic substances are detoxified.
- (c) During blood transfusion it is important that the blood groups of the donor and the recipient are compatible. In case of an incompatible blood transfusion, the recipient develops antibodies that attack the antigens present on the RBCs of the donor causing the blood cells to clump together which may result in death. The examination of Rh factor is also necessary for the blood transfusion. Therefore, the blood groups of both the donor and recipient must be known before transfusing blood.
- (d) Veins carry the blood from the body part towards the heart while the arteries carry the blood from the heart. Veins carry the blood against the force of gravity. Therefore, only the veins and not the arteries are provided with valves.
- (e) Atrial wall is less muscular than the ventricular wall because the major function of atria is to receive blood from the body and pump it into the next ventricles. While the ventricles pump the blood out of the heart. Right ventricle to the lungs and the left ventricle to all the body parts.
- (f) Arteries are responsible to carry oxygenated blood from the heart to the tissues. The blood flows in the artery under high pressure and in spurts. If arteries are located superficially then there is a high possibility of their damage which could lead to a lot of blood loss. To prevent this damage and blood loss, the arteries are deep seated in the body.

E. STRUCTURES/ APPLICATION / SKILL TYPE:**Question 1:**

Given below are the diagrammatic sketches of two kinds of blood vessels.





- (a) Identify the two kinds of blood vessels A and B.
 (b) name the parts numbers 1 to 6
 (c) Mention any two main differences between A and B.

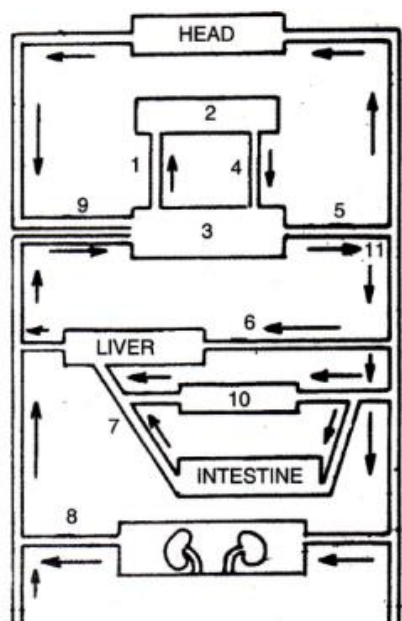
Solution 1:

- (a) A is artery, B is vein.
 (b) 1- Endothelium of the artery,
 2 - Middle layer of smooth muscles and elastic fibres of the artery,
 3 - External layer of connective tissue of the artery,
 4 - Endothelium of the vein,
 5 - Middle layer of smooth muscles and elastic fibres of the vein,
 6 - External layer of connective tissue of the vein.
 (c) An artery has thick muscular walls and a narrow lumen. It carries blood away from the heart towards any organ.
 A vein on the other hand has thin muscular walls and a wider lumen. It carries blood away from an organ towards the heart.

Question 2:

Given below is a highly schematic diagram of the human blood circulatory system.

- (a) which part (state the number) represents the heart? Give reason in support of your answer.
 (b) Which numbers represent the following respectively?
 Aorta
 Renal Vein
 Hepatic portal vein
 Pulmonary artery
 Stomach
 Dorsal aorta
 Superior vena cava

**Solution 2:**

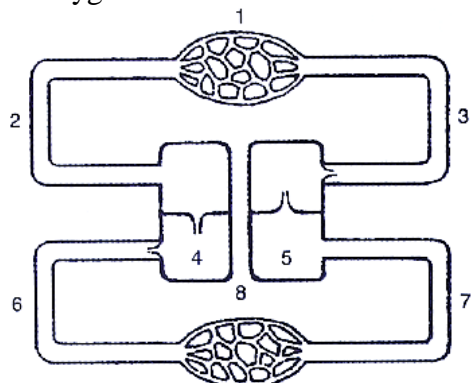
(a) The structure 3 represents the heart. It forms the centre of double circulation and is located between the liver and the head (as per the diagram). Also the blood circulation (indicated by 1) begins from heart to lungs.

(b)

Aorta	5
Hepatic portal vein	7
Pulmonary artery	1
Superior vena cava	9
Renal vein	8
Stomach	10
Dorsal aorta	11

Question 3:

Given diagram shows a simple diagram of the circulation of blood in a mammal showing the main blood vessels, the heart, lungs and body tissues. The blood vessel, labelled 6, contains deoxygenated blood and the valve leading to it has three semi-lunar pockets.



- (a) Name the blood vessels and organs marked by numbers 1 to 8.
 (b) What is meant by the term ‘double circulation’ of blood in mammals?
 (c) what is diastole?
 [There is an “error” in the diagram. According to the usual practice the pulmonary (lung) circulation is shown upward and the systemic downward, but here it is reversed].

Solution 3:

(a)

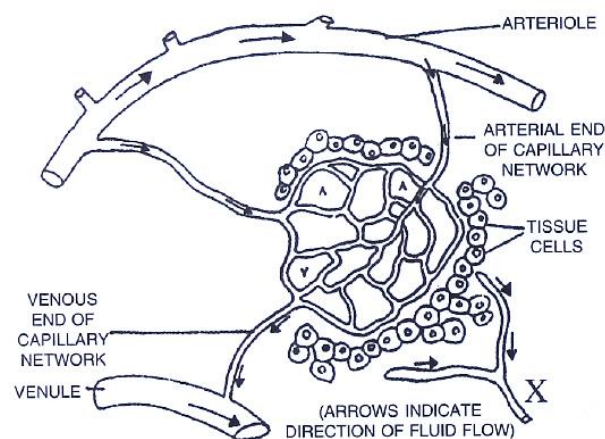
1	Systemic Circulation
2	Vena Cava
3	Aorta
4	Right Ventricle
5	Left Atrium
6	Pulmonary Artery
7	Pulmonary Vein
8	Pulmonary Circulation

- (b) Blood flows twice in the heart before it completes one full round. The full round thus includes pulmonary and systemic circulation. For this reason, the blood circulation in the human body is called double circulation.

The relaxation of muscles of ventricles or auricles is known as diastole.

Question 4:

The diagram below shows part of the capillary bed in an organ of the human body. Some of the blood arriving at the capillaries at points labelled A, moves out into the spaces between the tissue cells. Study the diagram and answer the questions that follow:



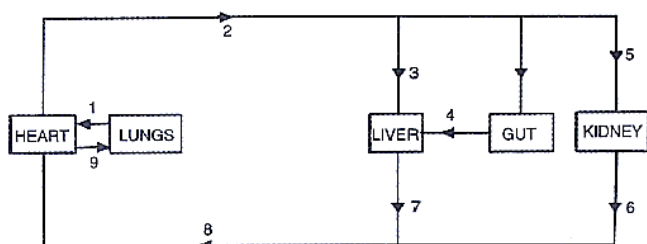
- (a) when the liquid from the blood surrounds the cells, what is it called?
 (b) Name any one important component of the blood which remains inside the capillaries and fails to move out into the spaces.
 (c) Some of the liquid surrounding the cells does not pass directly back into the blood but eventually reaches it by another route through vessel X. Name the fluid present in vessel X.
 (d) State two important functions performed in our body by the fluid present in the vessel X.

Solution 4:

- (a) Tissue Fluid
- (b) Red blood cells
- (c) Lymph
- (d) The lymph supplies nutrition and oxygen to those parts where blood cannot reach. The lymph drains away excess tissue fluids and metabolites and returns proteins to the blood from tissue spaces.

Question 5:

The following simplified diagram refers to the outline plan of the circulation of blood in a mammal. Study the diagram and write the number and the name of the blood vessel in each case as mentioned ahead.



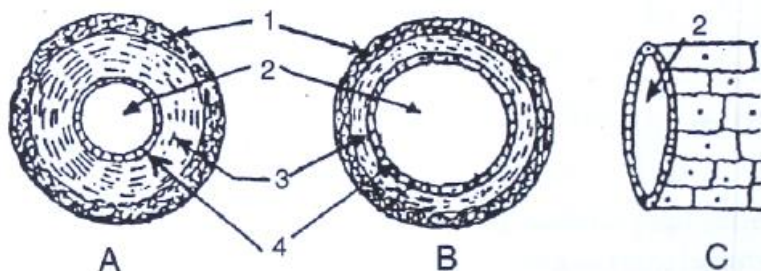
- (a) several hours after a meal containing a lot of protein, which vessel will contain the highest concentration of urea?
- (b) Which vessel would contain the highest concentration of amino acids and glucose soon after a meal?

Solution 5:

- (a) Hepatic portal vein (4)
- (b) Hepatic portal vein (4)

Question 6:

The figures given below show diagrammatic cross sections of three kinds of blood vessels.



- (a) Identify the blood vessels A, B and C
- (b) Name the parts labelled 1-4
- (c) Mention two structural differences between A and B.
- (d) Name the kinds of blood that flow through A and through B respectively.

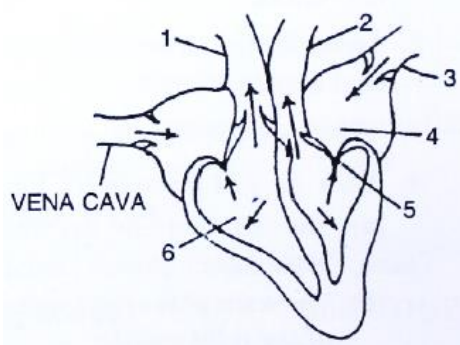
(e) In which one of the above vessels referred to in (a) above does the exchange of gases actually take place?

Solution 6:

- (a) A- Vein, B-Artery, C-Capillary
 (b) 1 - External layer made of connective tissue
 2 - Lumen
 3 - Middle layer of smooth muscles and elastic fibres
 4 - Endothelium
 (c) An **artery** has thick muscular walls and a narrow lumen. It does not have any valve. A **vein** on the other hand has thin muscular walls and a wider lumen. It has valves to prevent back flow of blood.
 (d) A (Vein) - deoxygenated blood, B (Artery)- oxygenated blood
 (e) At the capillary level the actual exchange of gases takes place.

Question 7:

The diagram given alongside represents the human heart in one phase of its activity. Study the same and then answer the questions that follow:



- (a) name the phase
 (b) Which part of the heart is contracting in this phase? Give a reason to support your answer.
 (c) Name the parts numbered 1 to 6
 (d) What type of blood flows through the parts marked '1' and '2' respectively?
 (e) How many valves are closed in this phase?

Solution 7:

- (a) Atrial Diastole and Ventricular Systole
 (b) Ventricular muscles are contracting during this phase because the valves between the two ventricles and pulmonary artery and aorta are open while the atrio-ventricular valves are closed.

(c)

1	Pulmonary Artery
2	Aorta
3	Pulmonary Vein
4	Left Atrium
5	Bicuspid Valve

6

Right Ventricle

(d) Part 1 (Pulmonary artery) Deoxygenated blood

Part 2 (Aorta) Oxygenated Blood

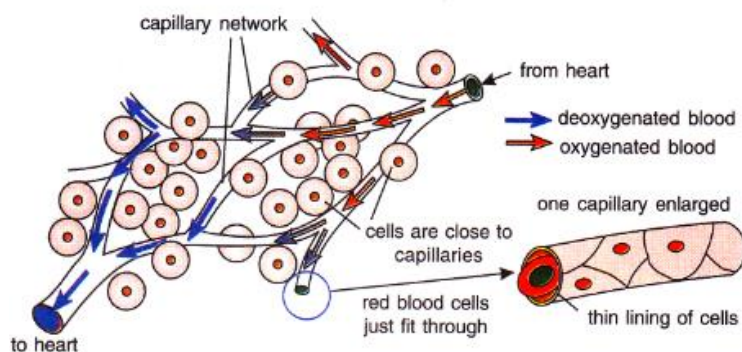
(e) Two i.e., bicuspid and tricuspid valves are closed in this phase

Question 8:

Study the following diagram carefully:

(a) With which figure in the chapter can you roughly compare this diagram?

(b) Write any two things shown in it as extra from those in the figure named above.

**Solution 8:**

(a) Diagrammatic relationship of artery, capillary and vein.

(b) The two extra things shown here are:

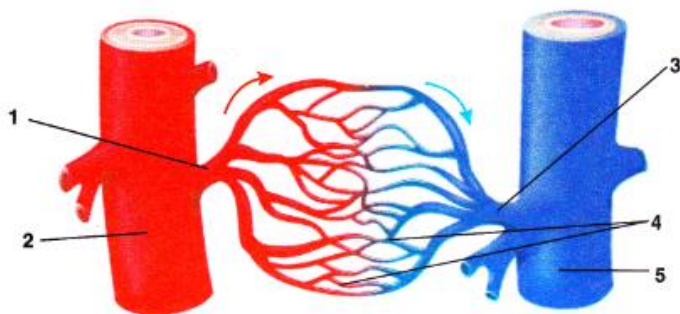
- (i) Arrows indicating the flow of blood to and from heart.
- (ii) Red blood cells passing through a capillary.

Question 9:

Given below is a diagrammatic representation of certain types of blood vessels in human body.

(a) Identify the types of blood vessels numbered 1 to 5.

(b) Where can such an arrangement be found as an example – in lungs or in heart walls?

**Solution 9:**

(a)

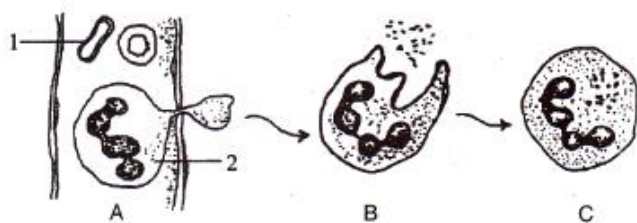
- 1 - Arteriole
- 2 - Artery
- 3 - Venule
- 4 - Capillaries
- 5 - Vein

(b) Such an arrangement can be observed in the lungs.

Question 10:

Study the following diagram carefully and then answer the questions that follow:

- (a) name the cell labelled 1.
- (b) Identify the phenomenon occurring in A.
- (c) Mention two structural differences between 1 and 2.
- (d) Name the process occurring in B and C and state the importance of this process in the human body.



Solution 10:

- (a) 1 - Red blood cell
- (b) Diapedesis
- (c)

RBC	WBC
They lack a nucleus.	They have a nucleus.
They are biconcave and disc-shaped.	They are spherical and have different sizes.

- (d) The process which occurs in B and C is phagocytosis. In this process, the WBCs engulf the foreign particles and destroy them, thus preventing the occurrence of disease.